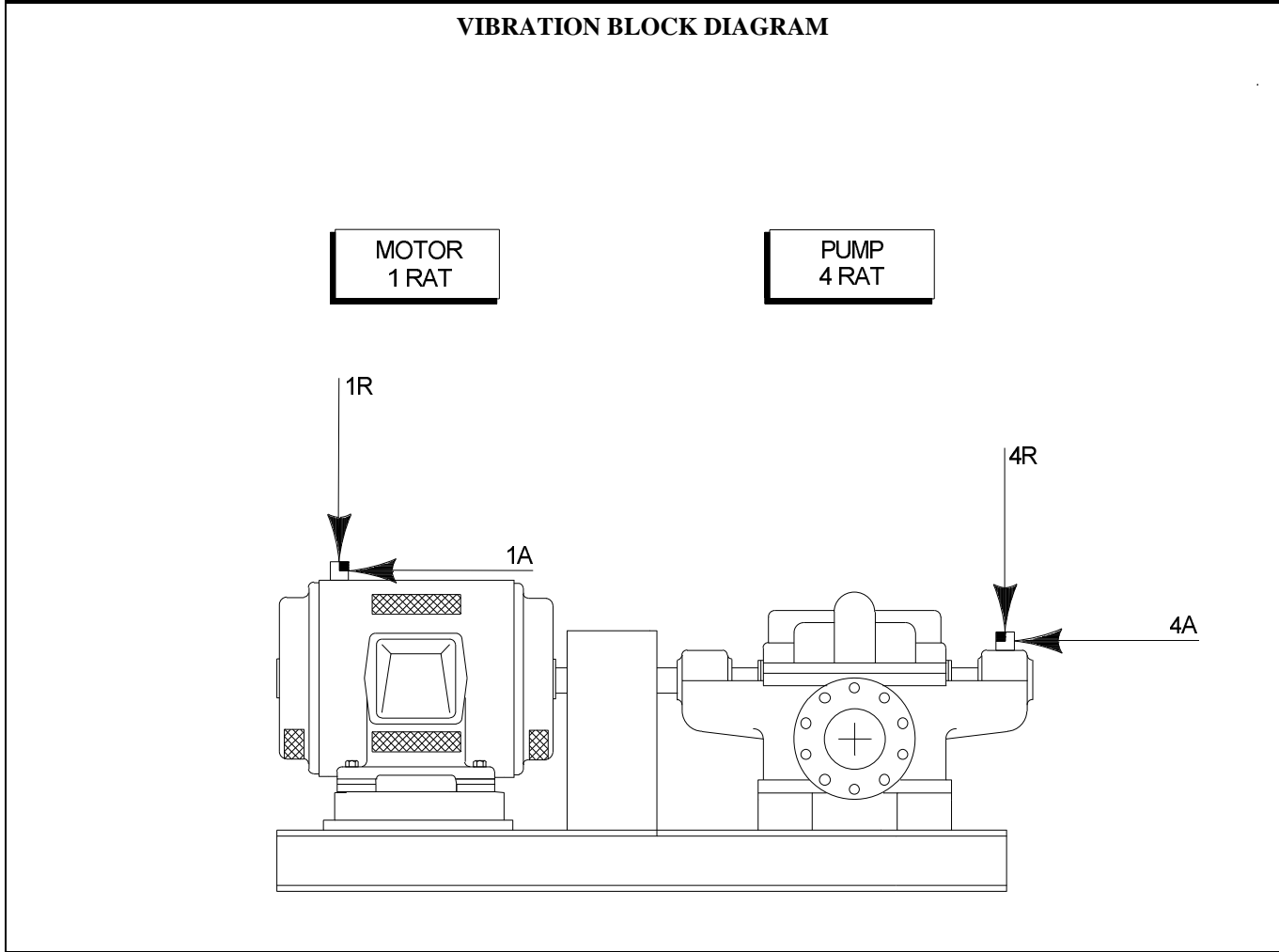


MACHINE: CHILLED WATER PUMP PLANT APPLICABILITY: XYZ Manufacturing UNITS: 1, 2, 3, 4, 5, 6	CMMS: 587-2 MID: 4010 DATE: December 2009
---	---

<i>DRIVER: MOTOR</i>	<i>INTERMEDIATE:</i>	<i>DRIVEN: PUMP</i>
APL: 174752816 MFR: Reliance MODEL: 326S844399 Tech Man: 0947-124-6010 HP: 40 INPUT: 440 Volts AC 62.4 Amps RPM: 1725 TYPE: 326UNS	APL: MFR: MODEL: T/M: RPMs: Input: Output: RATIO: TYPE:	APL: 016110540 MFR: Aurora MODEL: 341T Tech Man: 0947-153-4010 OUTPUT: 650 GPM @ 80 PSIG RPM: 3600 TYPE: Single Stage, Double Suction, Centrifugal

TEST RPMs and OPERATING CONDITIONS MOTOR: 1790 1. Test unit online after completely warmed up. 2. Ensure valves are aligned for full flow.	ANALYSIS RANGES REF RPM: 1 X MOTOR ORDERS: 10, 100
--	---

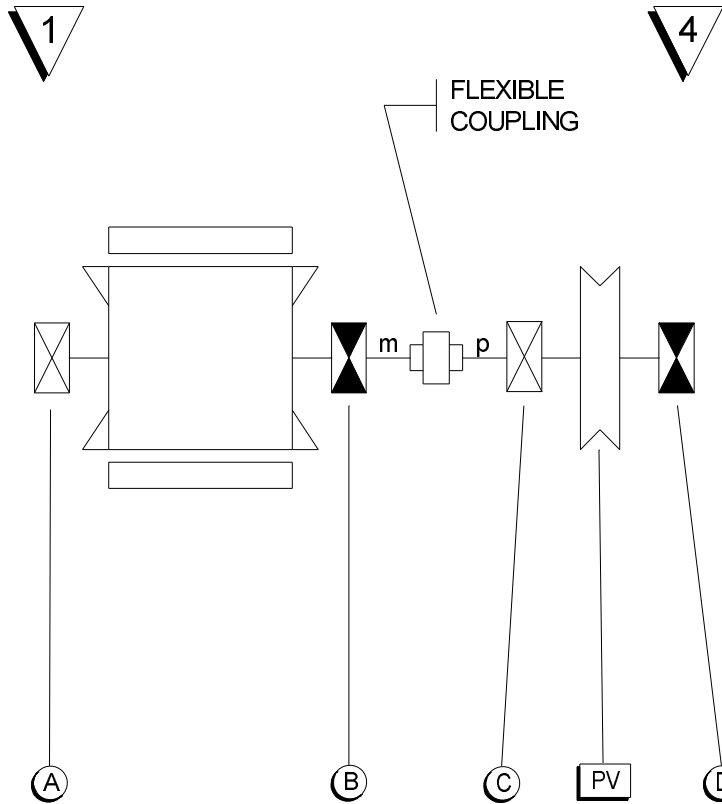


WATER PUMP	587-2 – 313
-------------------	--------------------

VIBRATION SOURCE COMPONENTS

DRIVER				INTERMEDIATE				DRIVEN			
ITEM	DESCRIPTION	ELEM	ORDER	ITEM	DESCRIPTION	ELEM	ORDER	ITEM	DESCRIPTION	ELEM	ORDER
m	Motor Shaft (Ref)		1.00m					p	Pump shaft		1.00m
	Slots	36	36.00m					PV	Impeller Vanes	5	5.00m
	Bars	47	47.00m								
	Poles	2	2.00m								
	<u>Bearing</u>		<u>Function</u>						<u>Bearing</u>		<u>Function</u>
A	W312PP		R-m					C	FAF 206WD		R-p
B	W313PP		R,T-m					D	FAF P5206WD		R,T-p

VIBRATION SOURCE DIAGRAM



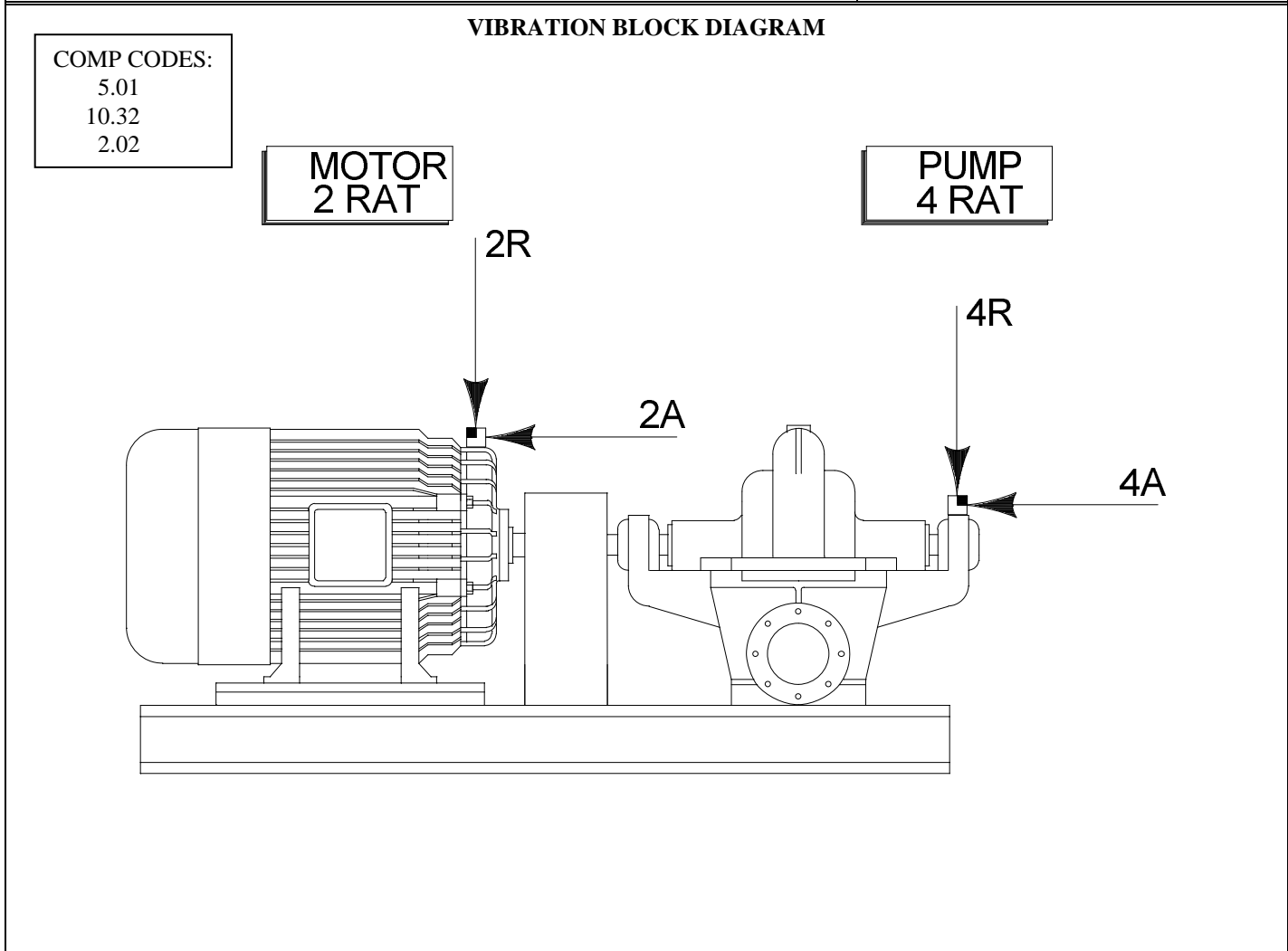
WATER PUMP

587-2 - 313

MACHINE: PRIMARY CHILL WATER PUMP	CMMS: 51420
PLANT APPLICABILITY: XYZ Manufacturing	MID: 4011
UNITS: 1, 2, 3	DATE: June 2009

<i>DRIVER: MOTOR</i>	<i>INTERMEDIATE:</i>	<i>DRIVEN: PUMP</i>
MFR: ABB MODEL: 3KLV4560 WATTS HP: 50 INPUT: 460 V @ 45 FLA RPM: 3560 TYPE: 356UNZ	MFR: MODEL: RPMs: Input: Output: RATIO: TYPE:	MFR: GOULDS MODEL: 331-R OUTPUT: 133 GPM @ 35 PSI RPM: 3600 TYPE: DOUBLE SUCTION, VOLUTE

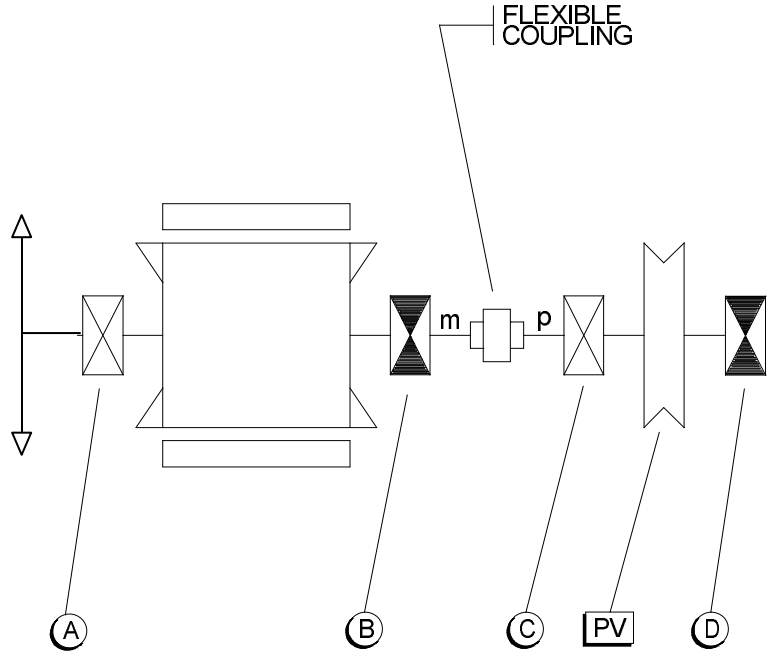
TEST RPMs and OPERATING CONDITIONS MOTOR : 3301 1. Take manual control of VFD and maintain 55 Hertz during test. 2. Ensure valves are aligned for full flow.	ANALYSIS RANGES REF RPM: 1 X MOTOR ORDERS: 10, 100
--	---



CHILL WATER PUMP	51420 – 11
------------------	------------

VIBRATION SOURCE COMPONENTS											
DRIVER				INTERMEDIATE				DRIVEN			
ITEM	DESCRIPTION	ELEM	ORDER	ITEM	DESCRIPTION	ELEM	ORDER	ITEM	DESCRIPTION	ELEM	ORDER
m	Motor Shaft (Ref)		1.00m					p	Pump Shaft		1.00m
	Slots	42	42.00m					PV	Impeller Vanes	6	6.00m
	Bars										
	Poles	2	4.00m								
	<u>Bearing</u>		<u>Funct</u>						<u>Bearing</u>		<u>Funct</u>
A	SKF 6311		R-m					C	SKF 6204		R-p
B	SKF 6312		R,T-m					D	SKF 6304		R,T-p

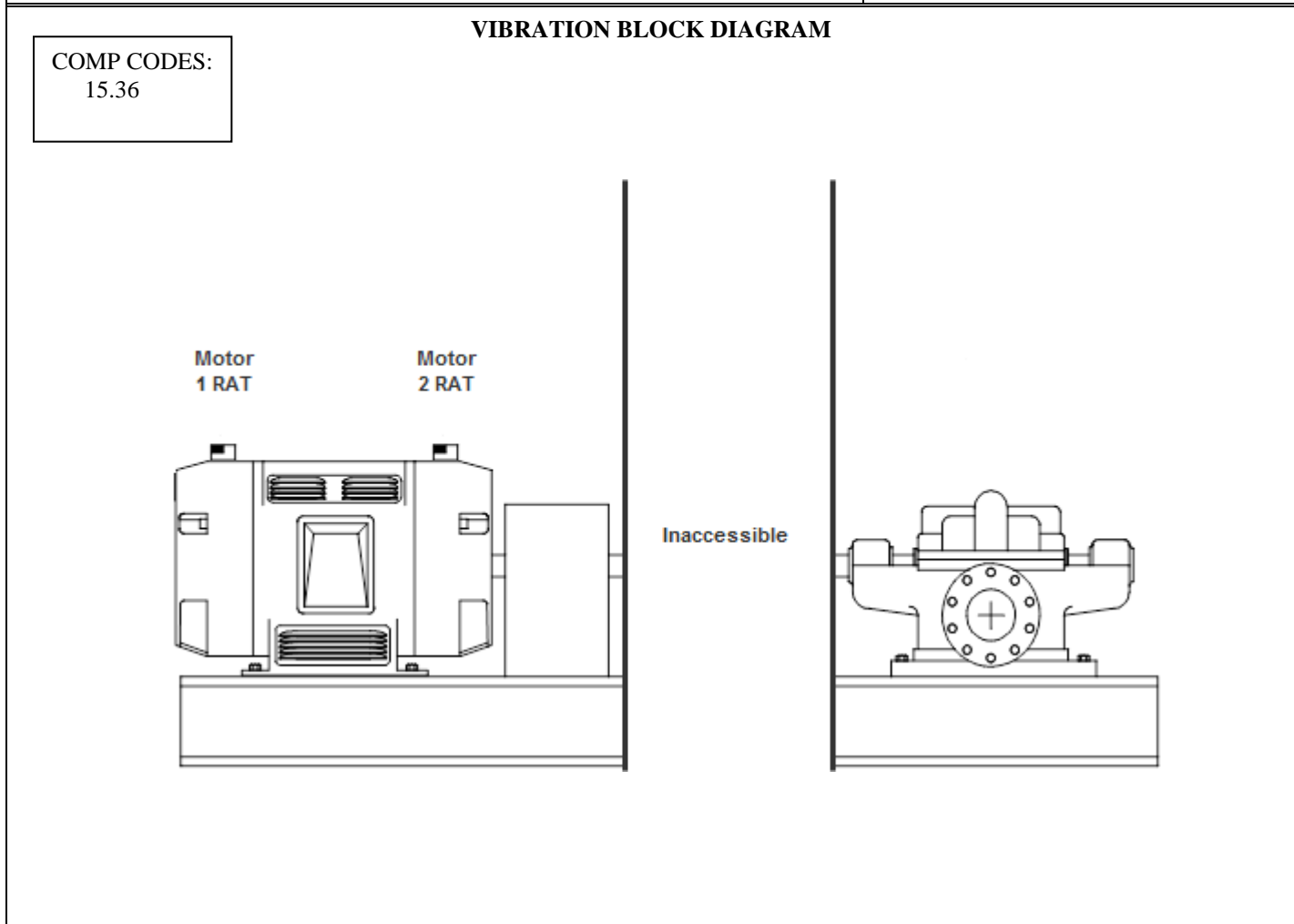
VIBRATION SOURCE DIAGRAM



MACHINE: STORM WATER PUMP	CMMS: 52120
PLANT APPLICABILITY: Bainbridge Water Authority	MID: 4012
UNITS: 1, 2, 3, 4, 5, 6, 7	DATE: June 2006

<i>DRIVER: MOTOR</i>	<i>INTERMEDIATE:</i>	<i>DRIVEN: PUMP</i>
MFR: GENERAL ELECTRIC MODEL: 449TTFS7347AN W HP: 150 INPUT: 460 V @ 125 FLA RPM: 1785 TYPE: 447/449T	MFR: MODEL: RPMs: Input: Output: RATIO: TYPE:	MFR: INGERSOLL DRESSER MODEL: 8LR-20 OUTPUT: 1000 GPM @ 125 PSI RPM: 1770 TYPE: DOUBLE SUCTION, VOLUTE

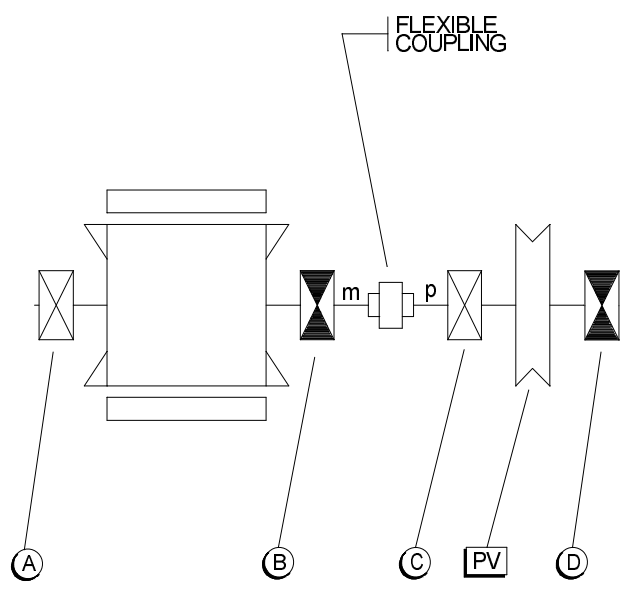
TEST RPMs and OPERATING CONDITIONS MOTOR : 1785 1. Test online after complete warm up. 2. Ensure valves are aligned for full flow.	ANALYSIS RANGES REF RPM: 1 X MOTOR ORDERS: 10, 100
--	---



STORM WATER PUMP	52120 – 1218
------------------	--------------

VIBRATION SOURCE COMPONENTS											
DRIVER				INTERMEDIATE				DRIVEN			
ITEM	DESCRIPTION	ELEM	ORDER	ITEM	DESCRIPTION	ELEM	ORDER	ITEM	DESCRIPTION	ELEM	ORDER
m	Motor Shaft (Ref)		1.00m					p	Pump Shaft		1.00m
	Slots	60	60.00m					PV	Impeller Vanes	4	4.00m
	Bars										
	Poles	4	4.00m								
	<u>Bearing</u>		<u>Funct</u>						<u>Bearing</u>		<u>Funct</u>
A	SKF 6311		R-m					C	SKF 6204		R-p
B	SKF 6312		R,T-m					D	SKF 6304		R,T-p

VIBRATION SOURCE DIAGRAM



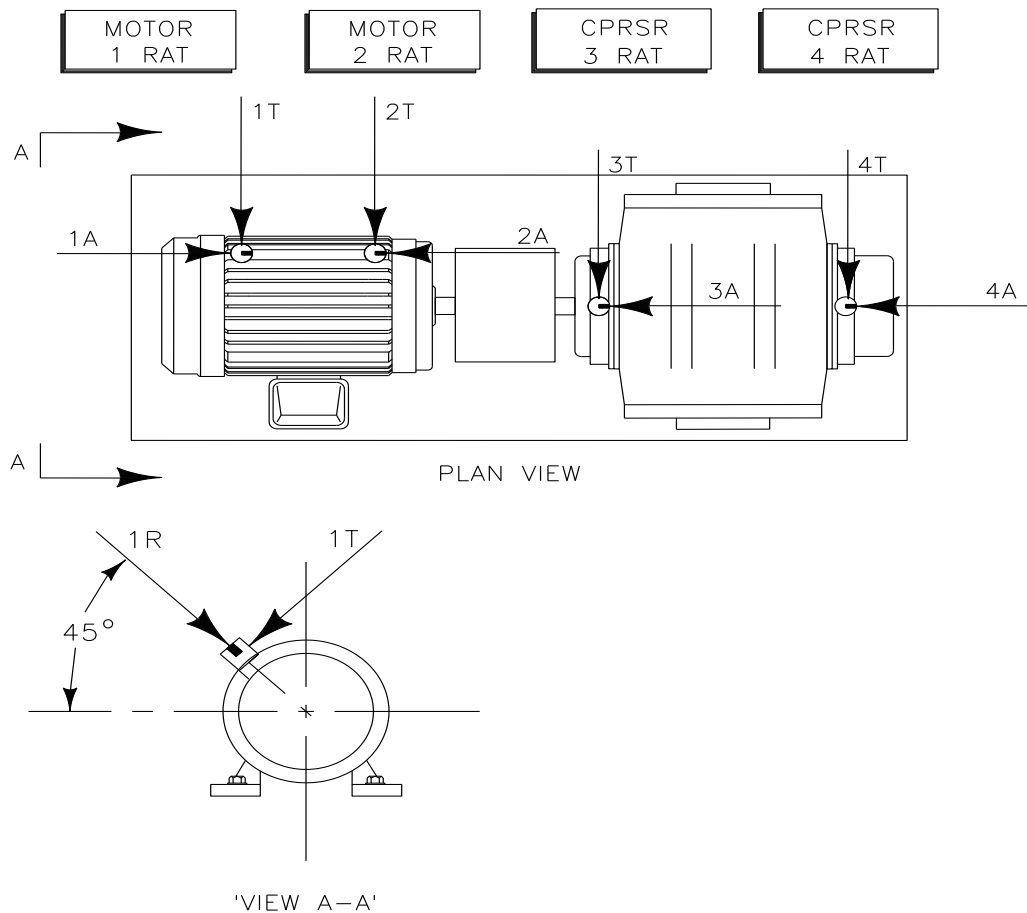
MACHINE: AERATION BLOWER
UNITS: U3.003

MID: 4013
DATE: November 2015

DRIVER		DRIVEN
S/N: 9002738-049 f2670209M MFR: U.S. MOTOR MODEL: MANUAL: HP: 40 INPUT: Voltage: 460 AC Current: A RPM: 1765 FRAME: 324T		S/N: MFR: SUTORBILT MODEL: 4506 MANUAL: OUTPUT: RPM: 1765 TYPE: ROTARY LOBE
TEST RPMs and OPERATING CONDITIONS DRIVER: 1780		ANALYSIS RANGES REF SHAFT: 1 X MOTOR ORDERS: 10, 100 FREQ Hz: 300, 3000

BLOCK LOCATION DIAGRAM

COMP CODES:
 15.01
 10.42
 7.51

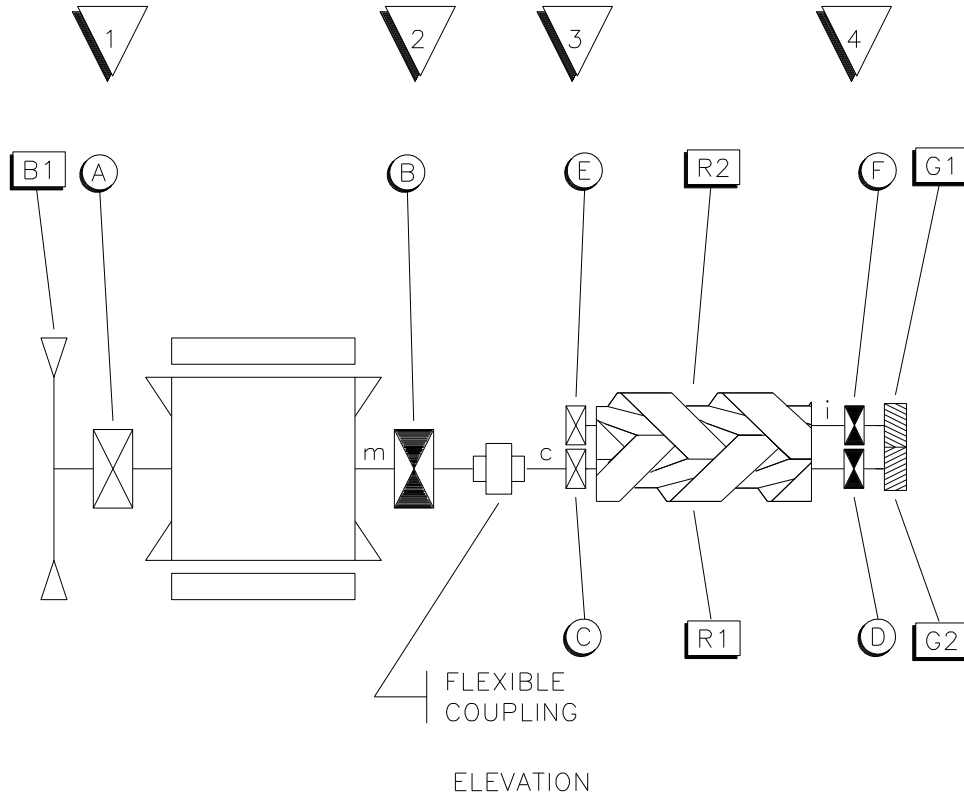


AERATION BLOWER

VIBRATION SOURCE COMPONENTS

DRIVER								DRIVEN			
ITEM	DESCRIPTION	ELE	ORDER					ITEM	DESCRIPTION	ELEM	ORDER
m	Motor Shaft		1.00m					c	Compressor Shaft		1.00m
B1	Fan Blades	18	18.0m					R1,2	Rotary Lobes	2	2.00m
	Slots	48	48.0m					G1,2	Timing Gear	45	45.00m
	Bars	56	56.0m								
	Poles	4	4.00m								
	<u>BEARINGS</u>								<u>BEARINGS</u>		
	<u>FUNCTION</u>								<u>FUNCTION</u>		
A	6211ZZ							C	NSK22308		
								D	NSK22308		
B	6211ZZ							E	SKF22308		
								F	SKF22308		

VIBRATION SOURCE DIAGRAM



AERATION BLOWER